

Area Percent Report

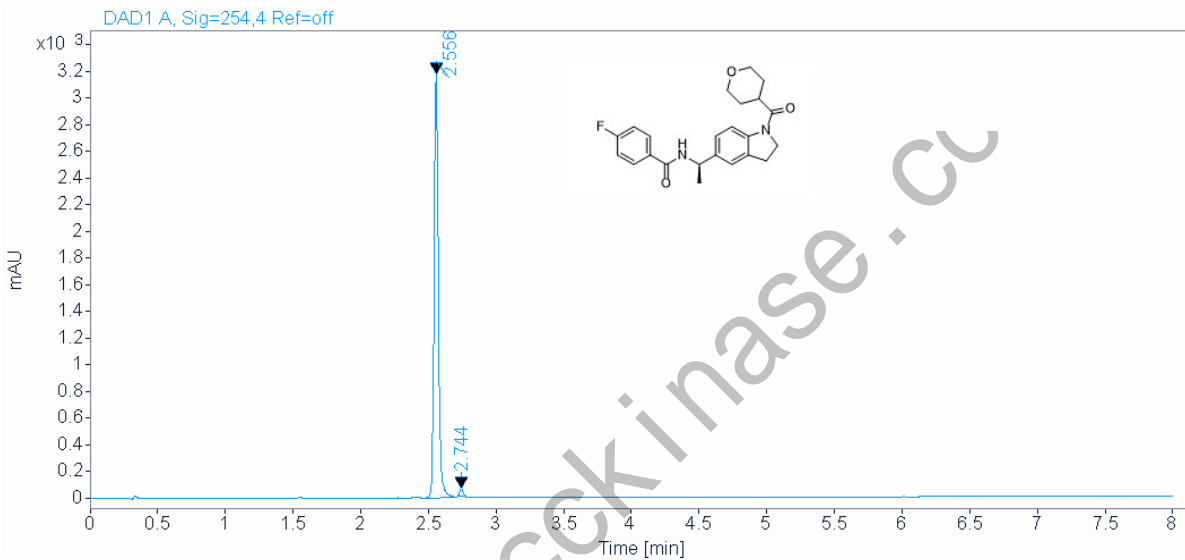


Agilent Technologies

Data file: E:\HPLC\data\TEST\00CJK 2020-12-01 11-06-50\001-P2-E1-111-06-53.D
Sample name: 1
Instrument: 2DLC
Injection date: 12/1/2020 11:07:56 AM
Acq. method: F0.6 254nm.M
Analysis method: F0.6 254nm.M
Sample type: Sample
Location: P2-E1
Injection: 1 of 1
Injection volume: 1.000

FLOW RATE : 0.6ml/min
COLUMN : ACE C18 50*2.1 2um
COLUMN TEMPERATURE : 30
GRADIENT PROGRAMME :
TIME(MIN) MOBILE PHASE-A(H2O+0.1TFA) MOBILE PHASE-B(CH3CN+0.1TFA)

0 90% 10%
6 0% 100%
8 0% 100%



Signal: DAD1 A, Sig=254,4 Ref=off

RT [min]	Type	Width [min]	Area	Height	Area%	Name
2.556	MM	0.0364	7044.1401	3226.2114	98.8310	
2.744	MM	0.0255	83.3168	54.5584	1.1690	
	Sum		7127.4570			