

Area Percent Report

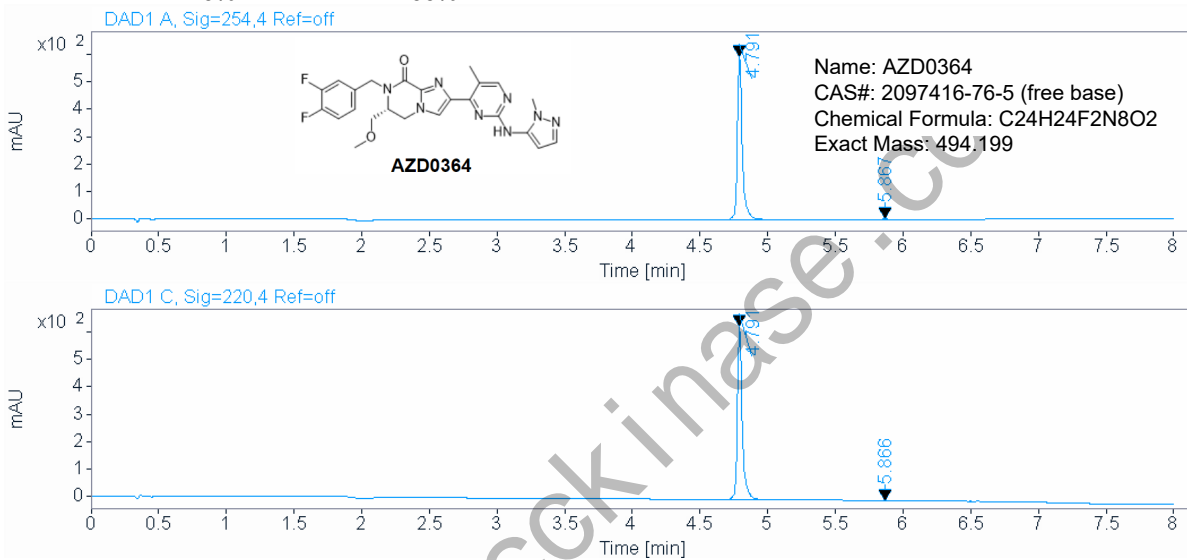


Agilent Technologies

Data file: E:\HPLC\data\TEST\00B0 2021-11-15 11-17-06\002-P2-B2-mg11-26-56.D
Sample name: mg
Instrument: 2DLC **Sample type:** Sample
Injection date: 11/15/2021 11:27:33 AM **Location:** P2-B2
Acq. method: F0.6-1 254nm.M **Injection:** 1 of 1
Analysis method: F0.6-1 254nm.M **Injection volume:** 0.300

FLOW RATE : 0.6ml/min
 COLUMN : ACE C18 50*2.1 2um
 COLUMN TEMPERATURE : 30
 GRADIENT PROGRAMME :
 TIME(MIN) MOBILE PHASE-A(H2O+0.1TFA) MOBILE PHASE-B(CH3CN+0.1TFA)

0 100% 0%
 10 50% 50%
 12 0% 100%



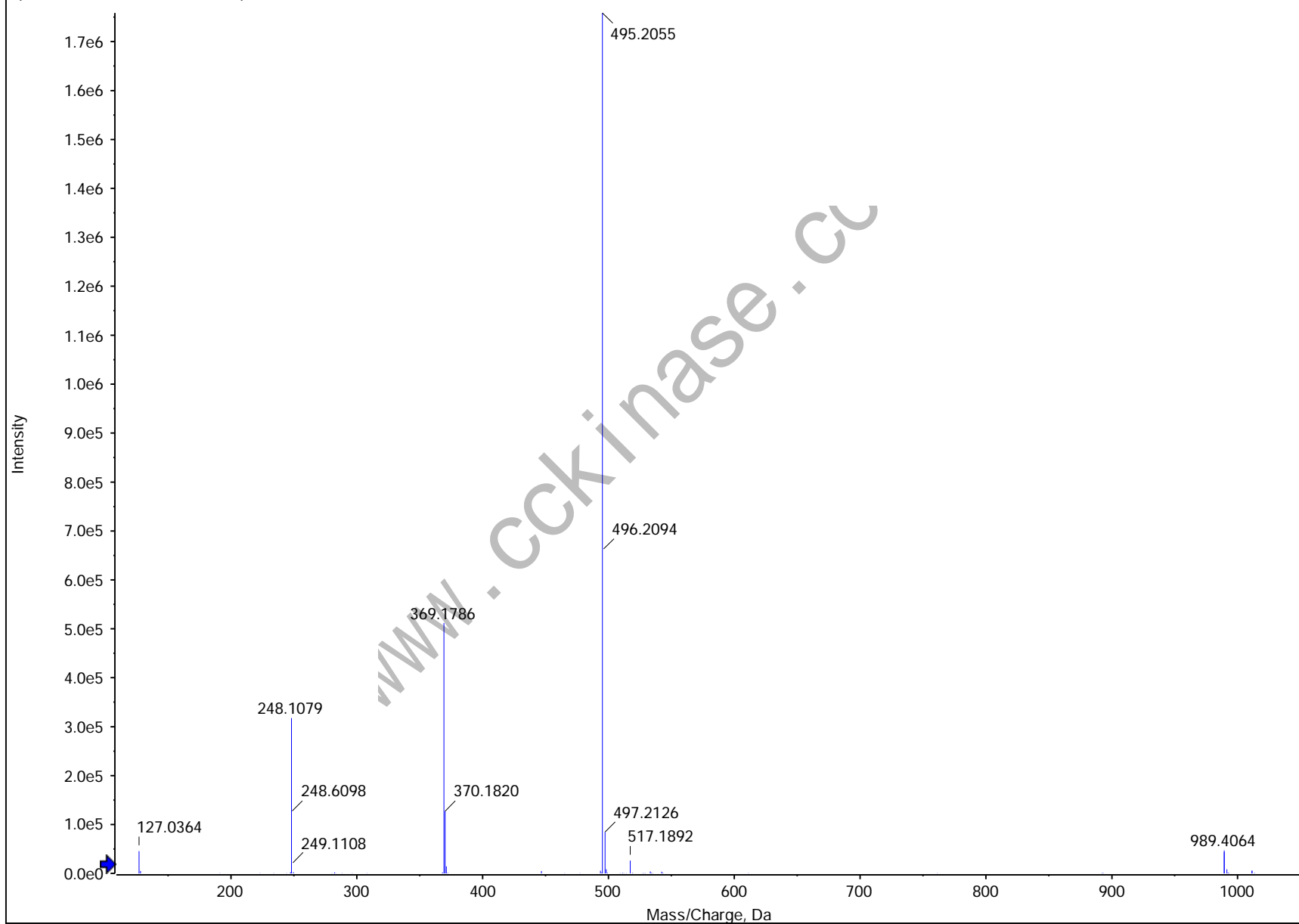
Signal: DAD1 A, Sig=254,4 Ref=off

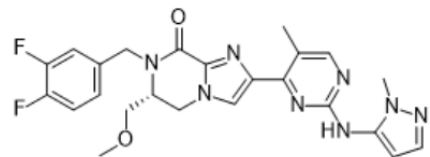
RT [min]	Type	Width [min]	Area	Height	Area%	Name
4.791	BB	0.0370	1486.8495	597.7514	99.7908	
5.867	BB	0.0380	3.1171	1.2139	0.2092	
	Sum		1489.9666			

Signal: DAD1 C, Sig=220,4 Ref=off

RT [min]	Type	Width [min]	Area	Height	Area%	Name
4.791	BV R	0.0371	1579.6687	633.2754	99.6796	
5.866	BB	0.0469	5.0774	1.5232	0.3204	
	Sum		1584.7461			

Spectrum from 211115.wiff (sample 15) - MG, +TOF MS (105 - 1500) from 0.142 to 0.179 min





AZD0364

